

# Introducing CombiSet SMARTeCH™

Two great products, seamlessly integrated



Simplify your ordering and inventory and reduce connections.



#### ONE SIMPLE CONNECTION DESIGNED TO...

- Reduce potential for misthreadings
- Lower potential for blood leaks



#### ONE EASY-TO-USE PRODUCT

- Less to store
- More efficient inventory control

#### Fresenius Renal Technologies, a division of Fresenius Medical Care North America

920 Winter Street  
Waltham, MA 02451  
[fmcna.com/combisetsmartech](http://fmcna.com/combisetsmartech)

**Customer Service:**  
800-323-5188

**Technical Service:**  
800-227-2572



#### Available with and without a heparin line.

For more information or to place an order, contact your Fresenius Medical Care regional sales representative today.

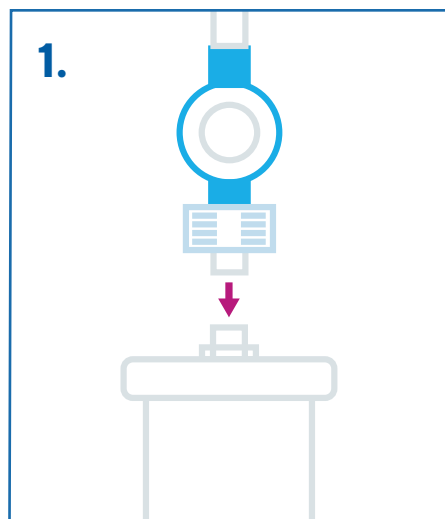
Part #	Product
03-2722-9C	CombiSet SMARTeCH with heparin line
03-2742-9C	CombiSet SMARTeCH without heparin line



**FRESENIUS  
MEDICAL CARE**

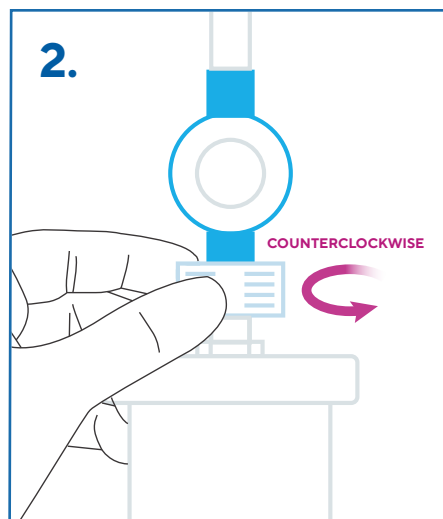
RENAL TECHNOLOGIES

# Simple setup



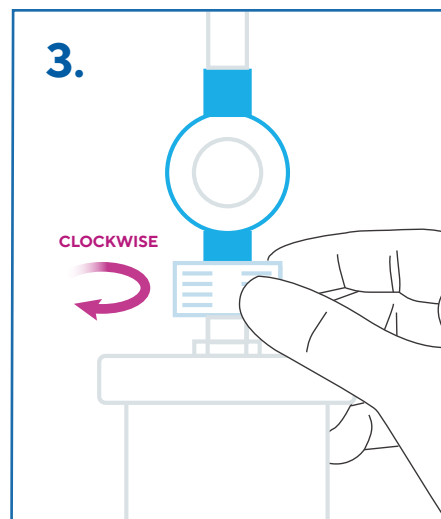
1.

Partially insert the blood chamber into the dialyzer.



2.

Twist counterclockwise until the blood chamber drops into place. Please be sure to see and feel that the blood chamber is securely seated before tightening.



3.

Twist the blood chamber clockwise by using the bloodline wings to thread the pieces together securely.

## INDICATIONS FOR USE:

- The Blood Tubing Set is a sterile, single use, disposable indicated for use with a prescribed hemodialyzer. The suitability of a particular bloodline/hemodialyzer configuration is the responsibility of the physician.
- The Blood Tubing Set is intended for acute and chronic hemodialysis therapy.
- The Blood Tubing Set is intended to be used with Fresenius Medical Care 2008® Series K, K2, and T Hemodialysis Machines equipped with Crit-Line hardware.
- The Crit-Line Blood Chamber is an optical cuvette designed for use with the Crit-Line monitor's sensor clip during acute and chronic hemodialysis therapy to non-invasively measure hematocrit, percent change in blood volume, and oxygen saturation.

Federal (US) law restricts these devices to sale by or on the order of a physician.

Note: Read the Instructions for Use for safe and proper use of these devices. For a complete description of hazards, contraindications, side effects, and precautions, see full package labeling at [fmcna.com](http://fmcna.com).



**FRESENIUS  
MEDICAL CARE**

RENAL TECHNOLOGIES